

金漫利医药
KingMyLab

A Core Member of KingMed

Since
2008



One My Lab

Scientific, Compliant & Comprehensive
Central Laboratory and Data Services for Clinical Trials

To be the world's leading central laboratory
for clinical trials

Vision

To be the world's leading central laboratory for clinical trials

Mission

Accelerating drug development, advancing human health

Values

Customer-Centricity
Value-Driven

Pragmatic Innovation
Persistent Endeavor



Since 2008

About KingMylab

KingMylab is a leading provider of central laboratory services for clinical trials in China. Founded in 2008 as the Clinical Trial Department of Guangzhou KingMed Diagnostics—China's largest clinical diagnostics corporation—then became independent in 2020. We deliver scientific, compliant and one-stop comprehensive central laboratory and data solutions for clinical trials to our pharmaceutical and biotech partners locally and globally. Our services cover the entire drug development pipeline across a broad range of therapeutic areas—including but not limited to oncology, immunology, metabolism, neurology, infectious diseases, vaccines and cell&gene therapy, as well as the full clinical trial lifecycle and international multi-regional trials.

KingMylab's quality system complies with NMPA, FDA, EMA and GLP/GCP requirements, relevant three laboratories in Guangzhou, Shanghai and Hong Kong China have obtained CAP, CLIA and ISO 15189 accreditations. We are committed to building an integrated central laboratory service chain for clinical trials and expanding into diversified clinical trial CRO services.



 4200+
Central Lab Testing Menu

 800+
Global Clients

 4500+
Clinical Trials

 90+
Innovative Drugs Supported

 80+
Technical Platforms

 160+
NMPA, FDA, EMA Inspections

Advancing innovation in biopharmaceutical research

<p>Chemical Drug </p> 	<p>Biological Product for Therapy </p> 
<p>CGT </p> 	<p>Vaccine </p> 

Milestone

2008-2013 Exploration

2008
Guangzhou KingMed accredited by CAP
Established the KMCT (the precursor to KingMylab)

2009
The first medical laboratory accredited by CAP & ISO 15189

2011
Undertook the first China pivotal study (ENESTCHINA)

2014-2022 Rapid Expansion

2014
China's first local central lab to fully support the "HPV Vaccine Phase III Clinical Trial"

2015
Alliance with US CRL, starting international laboratory collaboration

2016
The first project approved by NMPA based on China pivotal study Novartis's TASIGNA® for first-line treatment of Ph+CML

2018
Undertook the first GLOBAL TRIAL via Hong Kong KingMed laboratory
Joined the GDN to expand international lab network

2020
KingMylab established, supported over 2000 clinical trials

2021
Undertake research and development of vaccines and therapeutic drugs in COVID-19

2023-Present Accelerated Development

2023
KingMylab completed restructuring

2024
Layout of Guangzhou, Shanghai, Hong Kong three laboratories

2025
Supported approval of 25 innovative drugs/indications in 2025, and supported approval of 90+ innovative drugs/indications since 2008.



China Roots, Global Reach

Striving for global integrated clinical trial lab service



Multi-regional Clinical Trial

Extensive global strategic partner and clinical expert resources, providing , multi-center laboratory solutions across different countries and regions.

50+ Accumulated experience in executing MRCT projects

10+ Disease areas covered by MRCT projects
Oncology, cardiovascular, vaccines, infections, endocrinology, immunology, etc.

10+ Sample types imported by MRCT projects
Serum, plasma, sections, paraffin blocks, urine, etc.

Quality System Adhering to GCP and Global Regulatory Standards

Quality Policy

- Fairness and Compliance
- Authenticity and Rigor
- Scientific Accuracy

Quality Culture

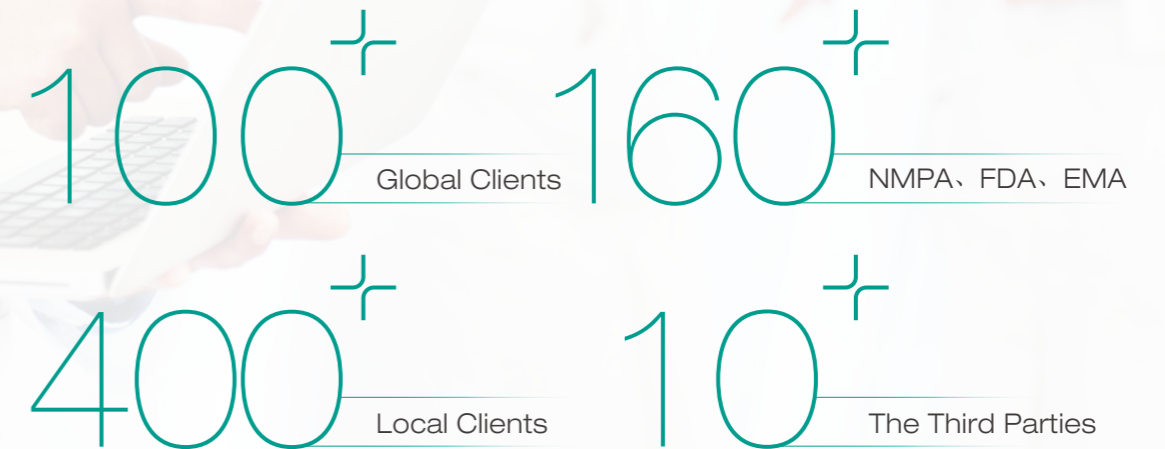
- Integrity
- Truth-Seeking
- Continuous Improvement

Based on CAP, CLIA, ISO15189 fully compliant with the quality management requirements of GCP/GCLP 21CFR part11



Extensive Experience of On-site/Remote Inspections & Audits

NMPA, FDA, EMA inspections 100% passed
Passed nearly 700 inspections by Dec. 2025



Comprehensive Lab Service Platform for Clinical Trials

One-stop Central Lab & Data platform for clinical trials



Bioanalysis

- A fully equipped bioanalytical platform
- Offering PK and immunogenicity analysis (large molecule, CGT, vaccine)



Central lab

- Comprehensive technology platforms, providing integrated multiomics solutions
- Over 4,200 established testing items
- Robust assay R&D capabilities



Data service

- Biomarker discovery and exploration
- Offering high-value-added data analysis services

Central Lab

Cutting-edge technologies and multi-omics platforms integrated to meet the needs of Ph I - IV clinical trials

Multi-omics Technologies and Platforms

Genome, pathology, flow cytometry, mass spectrometry, other comprehensive 12 categories of 82 types of clinical testing technologies



NGS

Pathology

Flow Cytometry

mIHC

Cytogenetics

IHC



Biochemistry

Infection

Immunology

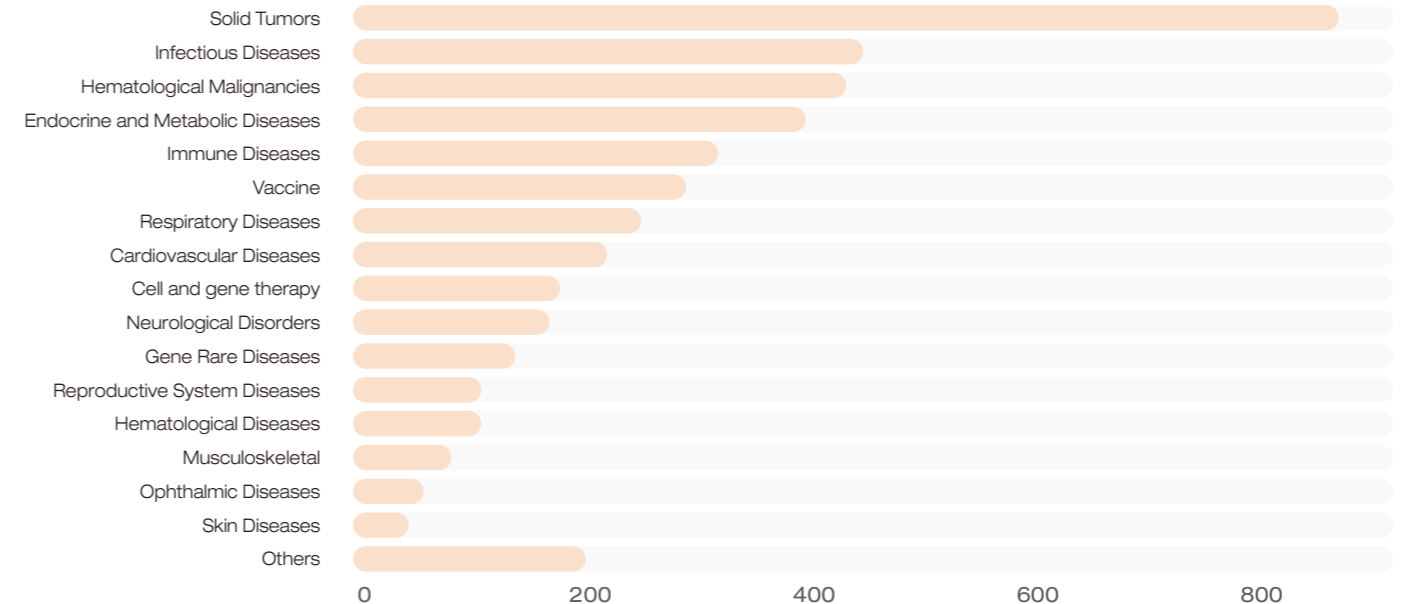
Routine Blood

Microorganism

HPLC-MS

Laboratory Solutions for Comprehensive Disease Areas

Accumulated 16 categories of clinical research lab solutions to efficiently empower different pipelines of pharmaceutical products



BioA Capability

Bioanalysis for Large Molecules, CGT and Vaccines

- Provide end-to-end services covering preclinical research and clinical phases I-IV, including method development, validation, and sample testing for pharmacokinetics (PK), pharmacodynamics (PD), immunogenicity (ADA/NAb), and biomarkers;
- Follow GxP regulatory requirements of major global regulatory agencies including NMPA, FDA, and EMA, and provides a full range of bioanalytical solutions to support drug development from drug discovery through clinical development.

100+

Clinical Trials(LM)

50+

MD & MV/MQ

300000+

Samples Tested Annually

ELISA



SpectraMax M5

ECL




MESO QuickPlex SQ120

qPCR/ddPCR



Roche Digital LightCycler

Cell-Based



Agilent BioTek Cytation

FACS



BD FACSLyric

ELISpot



ImmunoSpot S6

Data Service

Patient Intelligence
Strengthen Your Protocol with Patient Insights

Translational Medicine
Multidimensional Data-Driven Target and Biomarker Discovery

Real World Research
Real-World Data Supports ReValidation of Clinical Value

Market Insight
Panoramic Data Clarifies Market and Clinical Positioning



Medical Laboratory Data

23,000+ Medical Institution
100,000,000+ Annual Sample Volume
23.6P Total Medical Data

Clinical Trial Data

23,313,000+ Disease-Specific Database Data
4,500+ Clinical Projects
30+ Covered Indications

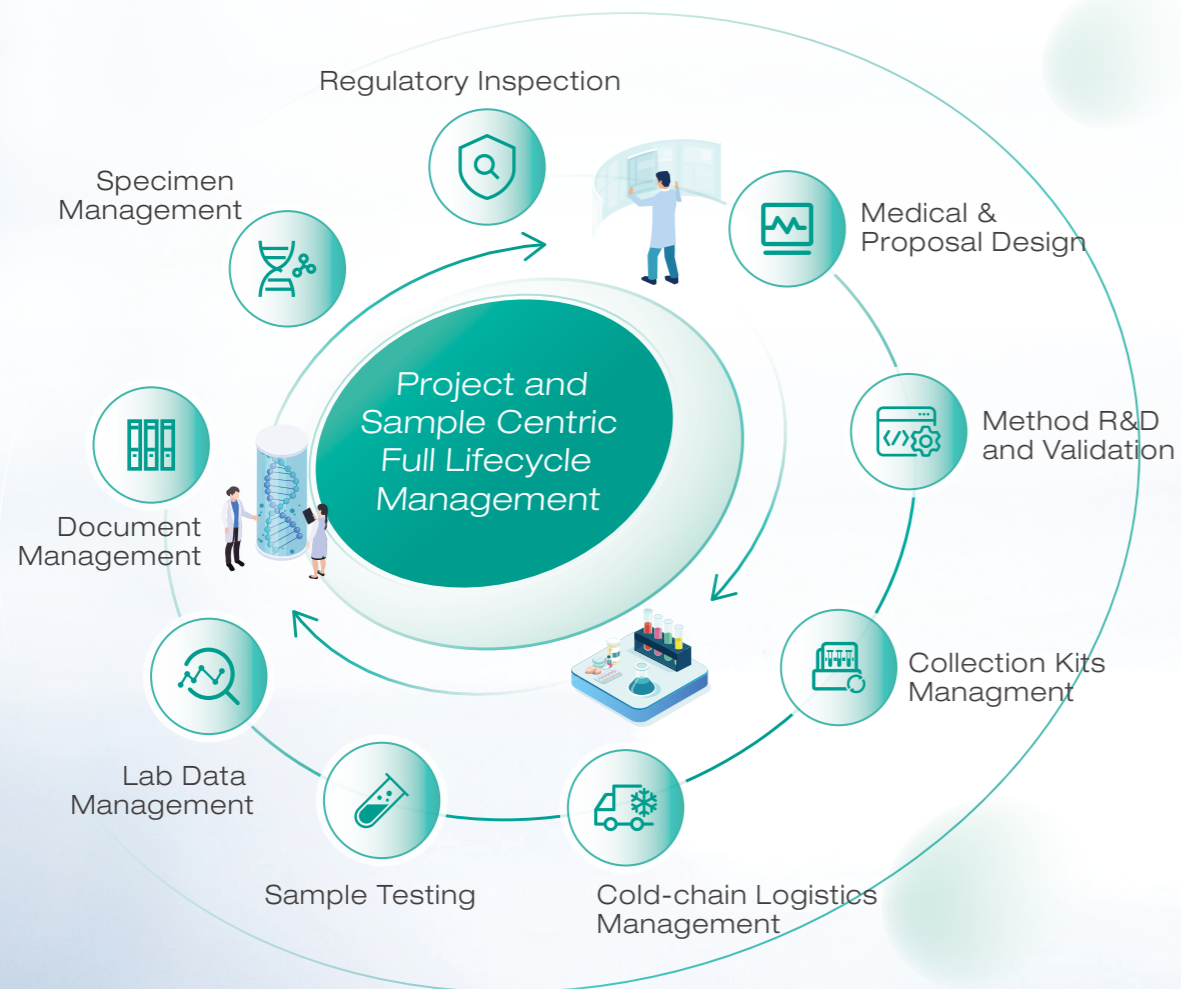
Disease-Specific Clinical Testing Database

<p>Respiratory Pathogen Targeted Sequencing Dataset</p> <p>2,493 million cases</p> <p>7.6G</p>	<p>Cervical Cancer Screening Dataset</p> <p>110 million cases</p> <p>7.3G</p>	<p>Lymphoma Comprehensive Diagnosis Dataset</p> <p>2,512 million cases</p> <p>43G</p>
<p>Renal Pathology Dataset</p> <p>415,000 cases</p> <p>200M</p>	<p>Neuroimmune Disease Related Antibody Dataset</p> <p>75,000 cases</p> <p>75,000 cases</p>	<p>Allergen Monitoring Dataset</p> <p>4,935 million cases</p> <p>42G</p>

One-Stop Central Lab Services

Ensure the authenticity, integrity, consistency and traceability of project samples and data

Comprehensively reduce research costs and risks + Effectively shorten research time = Improve Efficiency



Digital Support

Lab-CTMS
Project management system



KMCS
Central lab informatics system



Watson LIMS
BioA informatics system



Remote pathological system
Professional IRC service



Risk Management System

RFP confirmation	Kit supply
Sample tracking	CTMS system configuration
Assay development	Deviation/Variation control
Document traceability	Quality control of first batch testing
Project design	Report/Data delivery

LAB-CTMS: Enabling Multi-Party Collaboration and Full-Process Monitoring Management

LAB-CTMS is a project management system independently developed by KingMyLab, enabling digital management of the entire lifecycle of project samples and data.



Full-Process Management

Centralized management of project-related documents, personnel, subjects, etc. Visualized project progress to improve multiparty collaboration efficiency.



Global Monitoring

Sponsors can monitor project progress in real time and track testing processes promptly.



Data Analysis

Multi-dimensional visual statistical reports for monitoring and displaying the entire project lifecycle.



Consumables Request

Personalized, highquality, and convenient consumables customization.

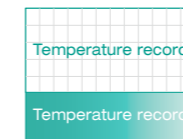


Scheduled Sample Submission

Real-time progress monitoring and tracking of sample submission information to ensure efficient, safe, and timely delivery of each sample. Global logistics network coverage.


Comprehensive Temperature Options


- Room temperature (15°C-25°C)
- Refrigerated (-20°C-0°C)
- Frozen (-40°C to -10°C)
- Freeze (-60°C to -80°C)
- Liquid nitrogen (below -150°C)




Report Inquiry

Online inquiry and download to obtain results as soon as possible.

-  Online system login inquiry

-  Data transmission via system integration

-  Regular data summary (weekly, monthly, or quarterly)

Global PARTNERS

(PARTIAL LIST)



Local PARTNERS

(PARTIAL LIST)



Our Advantages

Your best **Central Laboratory**

Partner for Clinical Trials in China



End-to-End Digital & Intelligent Management Centered on Projects & Samples



Seasoned Global Scientific Management Team



82 Technology Platforms Integrating 4,200+ Tests



4,500+ Global Innovative Drug Clinical Trial Projects



90+ Drugs Approved in China, US & EU Over 18 Years





Scientific, Compliant & Comprehensive
Central Laboratory and Data Services for Clinical Trials



Accelerating drug development, advancing human health

www.kingmylab.com 

Address: [Hong Kong] Unit 1, 1F, Remington Centre, 23 Hung To Road, Kwun Tong, Hong Kong, P.R. China.
[GuangZhou] 6F, Building 2, Unit 2 Luoxuan 4th Road, GuangZhou International Bio Island, Guangdong, P.R.China;
[Shanghai] 5F, Building 3, 115 Xinjun Ring Road, Minhang District, Shanghai, P.R. China;

E-mail: kingmylab@kingmylab.com

Tel: 020-28330088